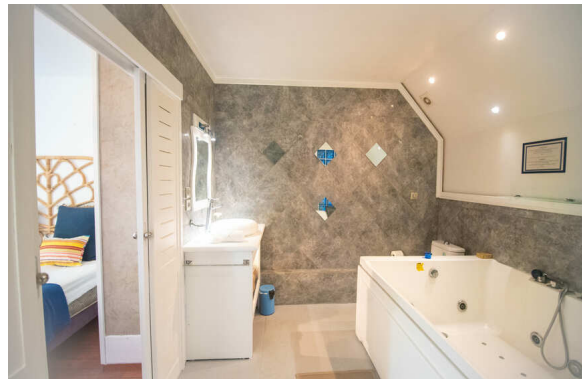
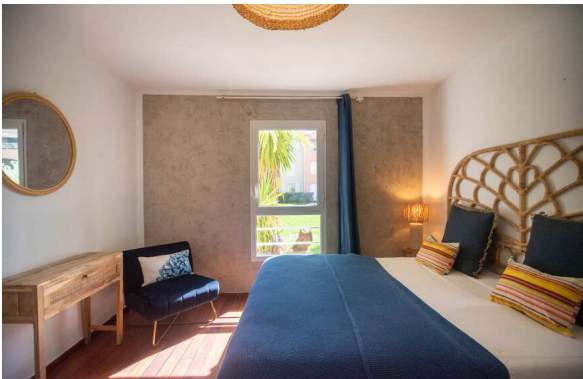


Appartement Pacha - Guadeloupe - Sainte-Anne



From 225.0 € / night - 2 bedroom(s) - 2 bathroom(s)

Galerie photos / Photo gallery



Votre location / Your rental

Discover a magnificent 2-bedroom apartment with sea and pool access, a true haven of peace ideally located in the charming village of Ste Anne, Grande-Terre, Guadeloupe.

This ground-floor apartment is part of a luxury, private and secure residence, equipped with an electric gate and a dedicated parking space. Just a 5-minute walk away, you'll find the splendid beach of the village of Ste Anne, as well as shops, a market, boutiques and restaurants.

Just 30 minutes from Pointe-à-Pitre airport, this two-bedroom, air-conditioned property is perfect for vacations with family or friends. Access is via a driveway that crosses the residence to the sea.

With an area of 80 m², this apartment can accommodate up to 4 people. The entrance opens onto a spacious and bright living room, air-conditioned, with a large comfortable sofa facing the sea and a flat-screen TV for relaxation. Two air-conditioned bedrooms offer optimal comfort: the first with a king-size bed and the second with two single beds, each with its own private bathroom, one with a walk-in shower and the other with a large bathtub.

The open kitchen to the living room is fully equipped: an American refrigerator with ice dispenser, Lavazza coffee maker with complimentary capsules, microwave, oven, and dishwasher. A pass-through allows you to enjoy the sea view while cooking. An adjoining small laundry room contains a washing machine and essential products.

The dining area, located on the covered terrace and separated from the living room by large bay windows, adds depth to the living space. This deck terrace, bordered by a small landscaped garden, features sun loungers and an outdoor shower. In just one minute, direct access leads you to a swimming staircase into turquoise water.

The secure residence also offers a large infinity pool with a sea view, reserved for residents. In just a 5-minute walk, you will reach the magnificent beaches of Sainte-Anne, the seafront market, boutiques, and restaurants. Nearby, you will find a bakery, a Casino supermarket, a fruit vendor, and a caterer.


With the beaches of Sainte-Anne, La Caravelle, and Bois Jolan nearby, you will be spoiled for choice to enjoy the sun and the sea. Take advantage of your stay to explore the artisanal village of Sainte-Anne and the commune of Saint-François, only 15 minutes away by car, where you can visit the Pointe des Châteaux and the marina with its numerous restaurants and shops.


Caractéristiques / Features

🏠 80 m2 / 👤 4 traveler(s) / 🛏 2 bedroom(s) / 💧 2 bathroom(s)

Equipements / Equipment


- | | | | |
|-----------------------|-----------------------|------------------------------|----------------|
| 🌬 Air conditioner | 👶 Baby chair | 🛁 Bathtub | 🌊 Beach access |
| 🧺 Beach towels | 🛏 Crib | 🍷 Dining table | 🍽 Dishwasher |
| ☕ Espresso machine | ☕ Filter coffee maker | 🅐 Free on-site parking | ❄ Freezer |
| 🌳 Garden | 💨 Hair dryer | 🛏 Household linen | 🧊 Ice maker |
| 🧊 Iron | 🍷 Kettle | 🍷 Lounge chairs | 📺 Microwave |
| ❄ Outdoor dining area | ❄ Outdoor furniture | 🚿 Outdoor shower | 🍷 Oven |
| 🅐 Parking | 🌊 Sea view | ❄ Single-story accommodation | 🎵 Sound system |


 Swimming pool

 TV

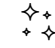
 Toaster

 Towels

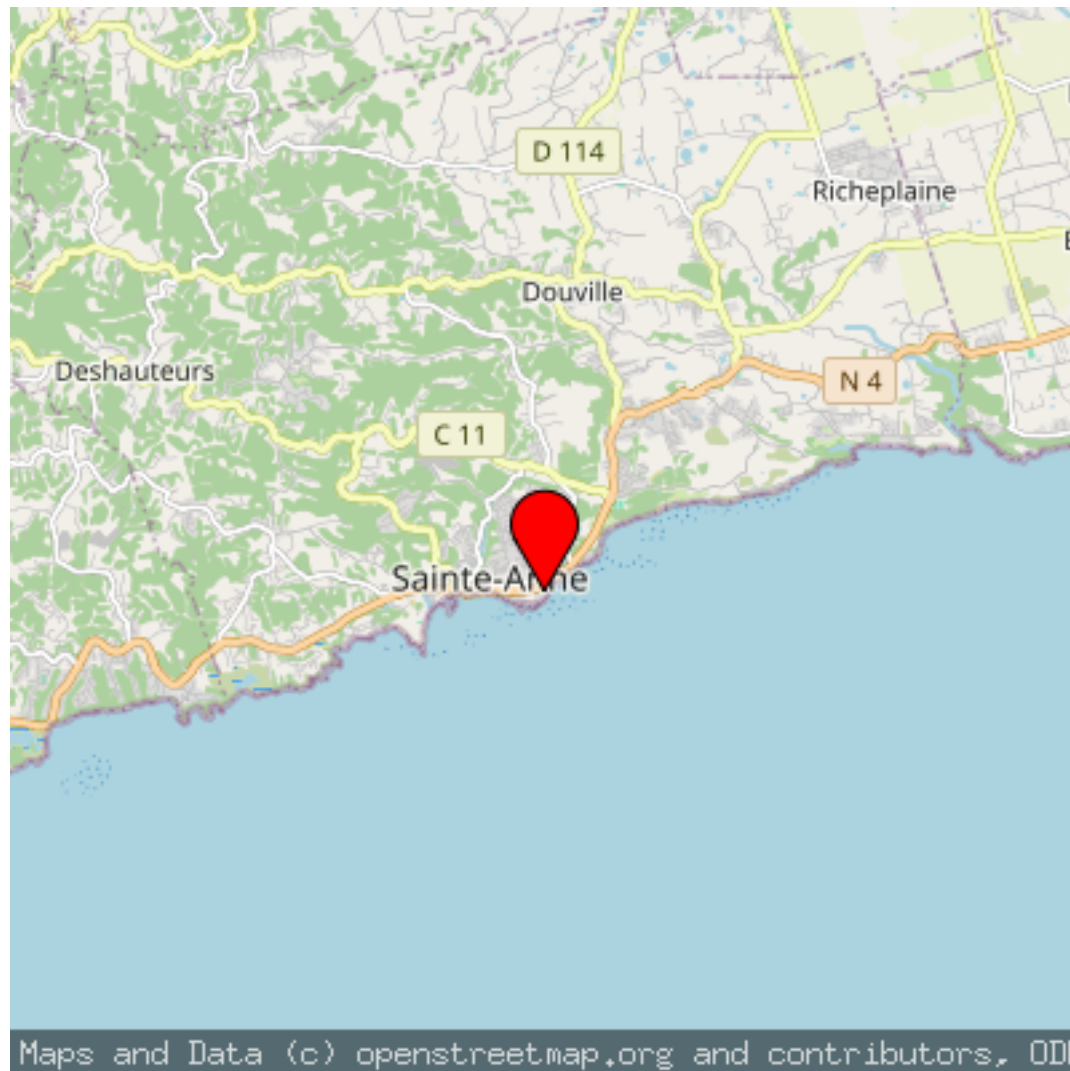
 Vacuum cleaner

 Washing machine

 Wifi

 Wine glasses

Localisation



Laurence

+590 690 84 80 50
guadeloupe@villaveo.com